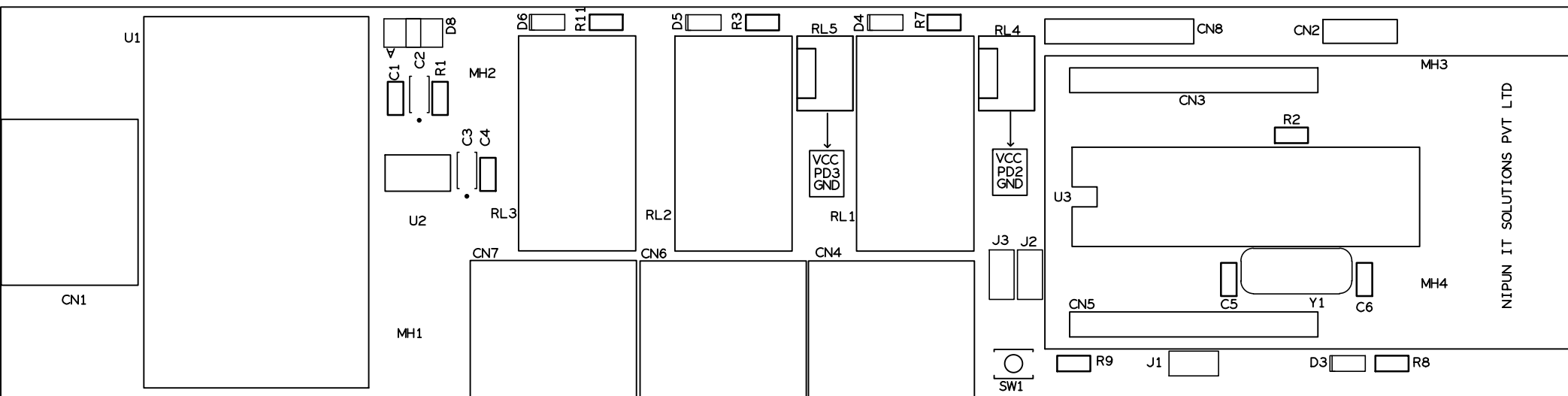
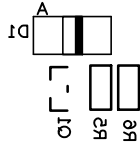
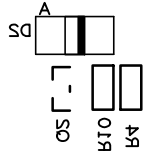
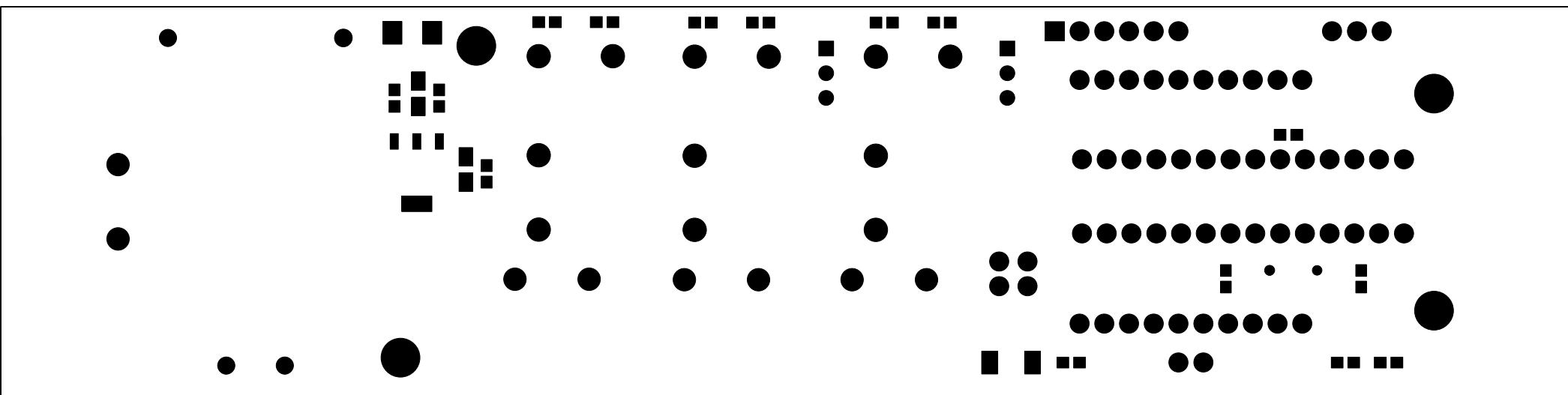


TOP LAYER

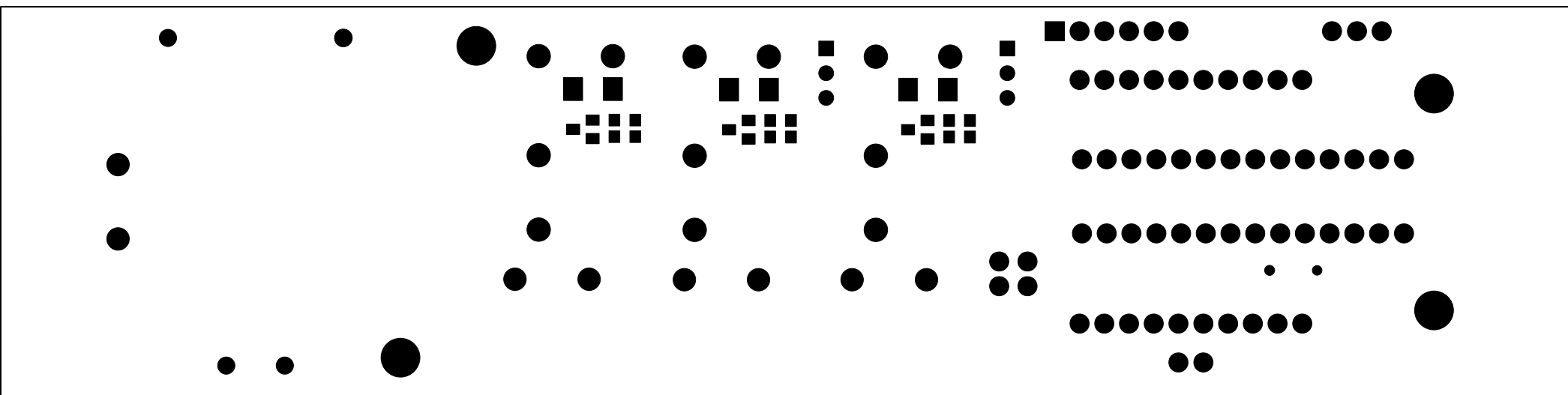


SILK SCREEN TOP

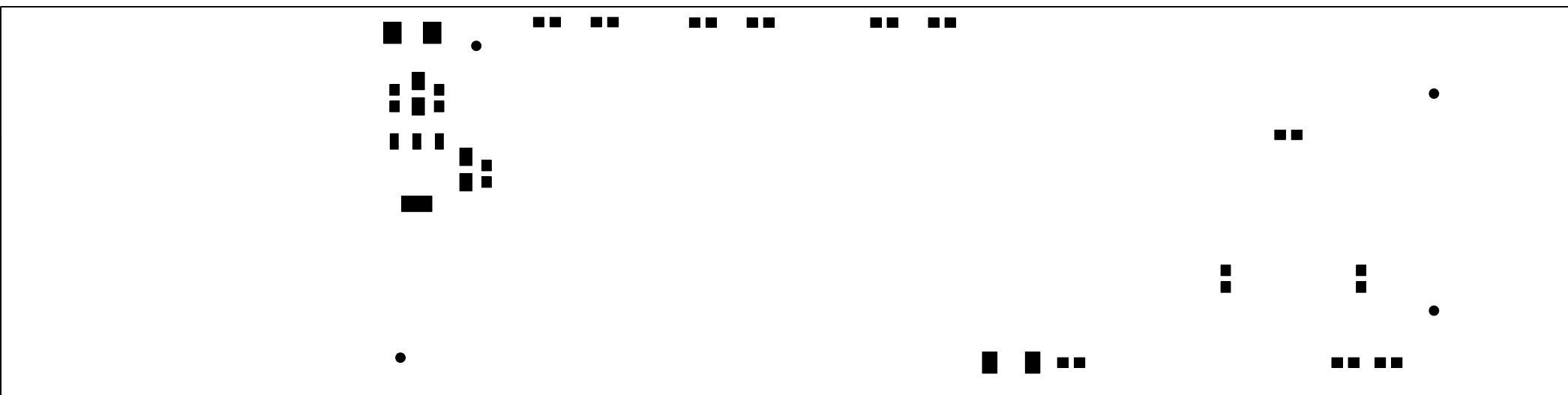




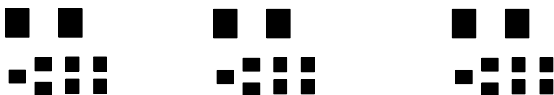
SOLDERMASK TOP

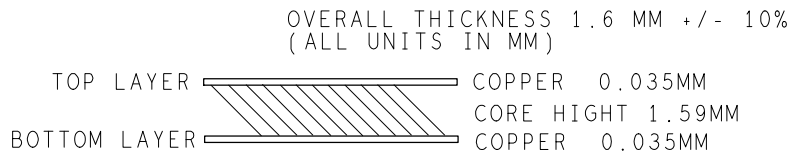


20LDERMANSK BOTTOM



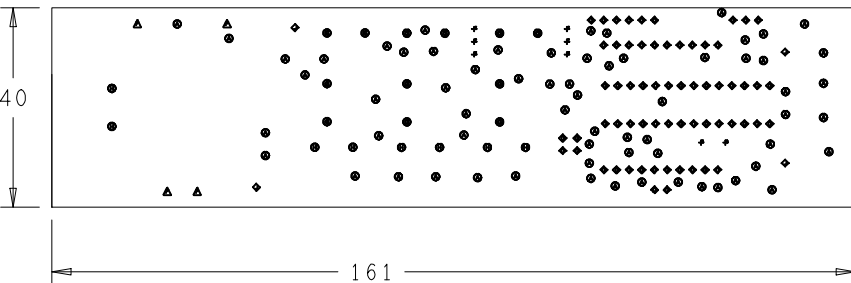
PASTEMASK TOP



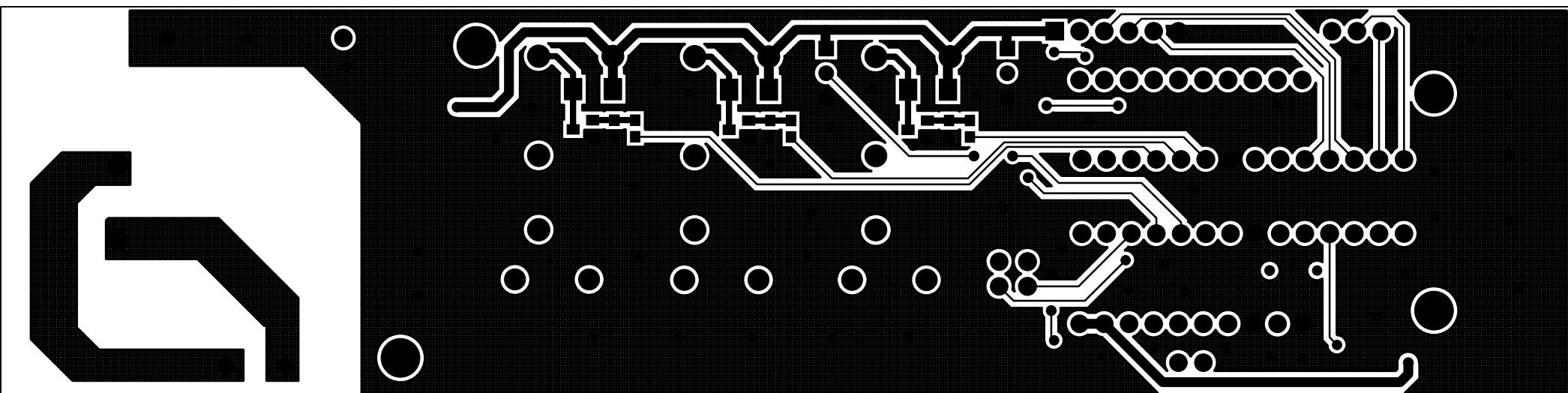


FAB NOTE :

- 1) NO OF LAYERS : 2
- 2) PCB SIZE: 161 X 40 X 1.6 MM
- 3) BOARD FINISH- HASL
- 4) SOLDER MASK COLOUR GREEN ON TOP AND BOTTOM SIDE.
- 5) COPPER FOIL THICKNESS IS 1 OZ
- 6) MATERIAL GLASS EPOXY FR4, 94V -0 ONLY
- 7) SCREEN PRINT ON WHITE INDELIBLE INK AS PER PS-872.
- 8) TOLERANCE ON OVERALL DIMENSIONS IS +0.1 MM.
- 9) TIN PLATING/HOT AIR LEVELLING AS PER PS-846.
- 10) LAMINATE BOARD AS PER LAYER MANAGEMENT
- 11) BOARD DIMENSIONS AND PLATED HOLE DIMENSIONS AS PER DRILL DRAWING.



DRILL CHART: TOP to BOTTOM			
ALL UNITS ARE IN MILS			
FIGURE	SIZE	PLATED	QTY
●	20.0	PLATED	65
•	24.803	PLATED	2
+	40.0	PLATED	6
◆	46.0	PLATED	63
▲	47.244	PLATED	4
●	51.181	PLATED	12
●	59.055	PLATED	8
◆	125.984	PLATED	4



REYAJ MOTTOB